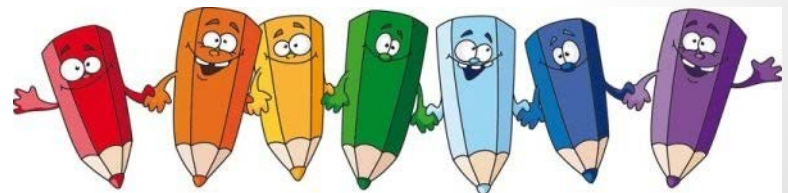


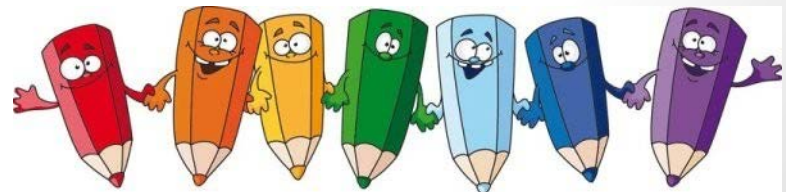
Year 10 English versus Year 10 Literature

Which subject is the best
choice for you?



Major Differences

- In English, there is a much greater emphasis on persuasive texts.
- In Literature, students study a wider range of text types.
- In Literature, students study texts in greater detail.



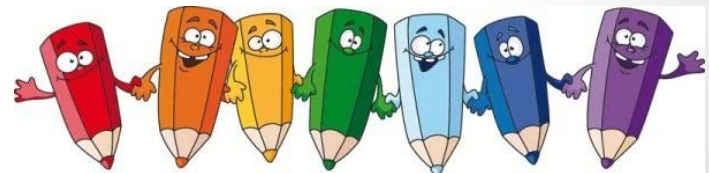
Typical CATs for Year 10 English

Semester 1:

- Analysis of a persuasive text (incl. 4-5 practice essays)
- Persuasive speech
- Analytical and creative responses to **one** text

Semester 2:

- Analysis of a persuasive text (incl. 4-5 practice essays)
- Persuasive essay
- Comparative essay (play and film)



Typical CATs for Year 10 Literature

Semester 1:

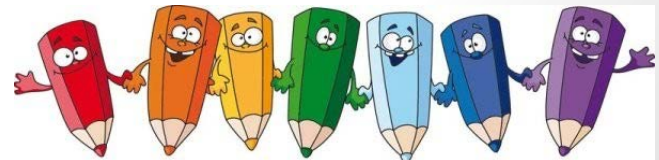
- Critical analysis of a review
- Analysis of a novel and its film adaptation
- Comparative analysis of paired poems (oral)
- Creative response to a studied text

Semester 2:

- Analysis of the language and ideas in a Shakespearean play
- Analysis of a persuasive text
- Persuasive speech

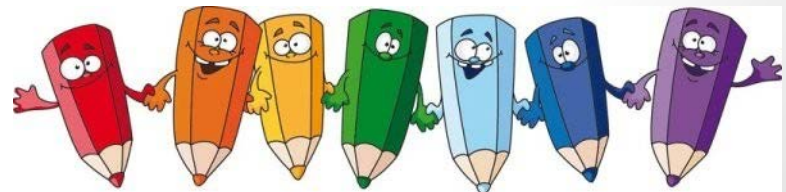
OR

- Analysis of a free-choice novel and its film adaptation (oral)
- Creative response to a studied text



You are suited to Literature if you:

- Have achieved above average results in English (including ODT and/or NAPLAN data)
- Have good-high level reading and writing skills
- Are prepared to work diligently
- Can think independently
- Enjoy reading and writing
- Enjoy discussing novels, films, etc. with other people
- **You do not have to be a HAP student to study Literature!**



If you want more information about Year 10 Literature, speak to...

- Ms. Broekmann: A6s
- Miss Mannens: B5s

(You can also speak to your Year 9 English teacher.)

